

BIOGRAPHICAL NOTES

Little Women



Annes Elwy
Beth March in *Little Women*

Annes can be seen in Channel 4's anthology series Philip K. Dick's *Electric Dreams*, which will stream on Amazon in 2018. Last year, she shot period feature *Apostle*, directed by Gareth Evans for Netflix, which is due for release this year. Her feature debut performance in Gareth Bryn's *The Passing* was long-listed for the British Independent Film Awards "Most Promising Newcomer" in 2016. Recent stage work includes the award-winning *Yen*, written by Anna Jordan and directed by Ned Bennett at the Royal Exchange and the Royal Court Theatre, and *The Crucible*, directed by Tom Morris at Bristol Old Vic. Annes trained at the Royal Welsh College of Music and Drama.



Willa Fitzgerald
Meg March in *Little Women*

A Nashville native, Willa Fitzgerald relocated to New York upon graduating from Yale University and has not stopped working since. Fitzgerald is the lead on MTV's *Scream*, and was nominated for a 2015 Teen Choice Award for "Choice Summer TV Star" for her performance. She recently wrapped the feature film *Misfortune*, alongside John Cusack, as well as the independent feature film *Freak Show*, directed by Trudie Styler. She can also be seen as the lead in *Beach House*, directed by Jason Saltiel. Willa played the recurring role of Amy Sedaris and Matt Malloy's daughter on Amazon's *Alpha House*. She was concurrently seen on season 6 of *Royal Pains*, where she made life in the Hamptons interesting for her newly discovered half-brother Hank (Mark Feuerstein). Willa has also made guest appearances on *Gotham*, *The Following* and *Blue Bloods*. In addition, she appeared in the *Untitled Wall Street Project* for CBS and the USA pilot *The Novice*. On stage, Willa starred in Michael Mitnick's *Spacebar: A Broadway Play* By Kyle Sugarman produced by The Wild Project. She spent a summer at the Berkshire Theater Festival in *The Cat and The Canary* and was featured in *Cow Play* at the New York International Fringe Festival.



Jonah Hauer-King

Laurie Laurence in *Little Women*

Young British actor Jonah Hauer-King juggled acting roles on stage and screen while studying at Cambridge University until his graduation this year. With an array of exciting projects in the works, the next few months promise to firmly establish him as a strong emerging talent. Jonah recently starred in the TV series *Howard's End*, which aired on BBC One in the UK in November and will air on Starz in the US soon. Jonah also appears in a number of upcoming feature films. *The Last Photograph*, which recently received its World Premiere at the Edinburgh International Film Festival, is the latest project from actor and director Danny Huston. Jonah stars alongside Bel Powley in *Ashes In The Snow*, based upon the novel *Between Shades Of Gray* by Ruta Sepetys. Jonah will also feature in *Old Boys*, alongside Alex Lawther, and *Postcards From London*, for which he also wrote and performed music for the soundtrack of the film. Jonah was heavily involved in theatre while studying at Cambridge, alongside taking on professional theatre roles. He made his West End debut in *The Entertainer*, opposite Kenneth Branagh at the Garrick Theatre. He also appeared in *Punk Rock* at the Lyric Theatre, Belfast. In 2016, Jonah was featured in the Evening Standard's Progress 1000: London's most influential people 2016 - Rising Stars.



Maya Hawke

Jo March in *Little Women*

Maya Hawke grew up in New York City where she recently completed her first year in the acting program at The Juilliard School. She can currently be seen as one of the newest faces of Calvin Klein in the spring 2017 campaign shot by Sofia Coppola. *Little Women* marks Maya's television debut.



Angela Lansbury

Aunt March in *Little Women*

Angela Lansbury's career spans seven decades, starting at age 17 with the movie *Gaslight* (Academy Award® nomination). She is the recipient of five Tony Awards®, an Olivier, six Golden Globes® and an Academy Award® for Lifetime Achievement. Her 1957 Broadway debut, *Hotel Paradiso*, was followed by *A Taste of Honey* (1960), *Anyone Can Whistle* (1964), *Mame* (1966), *Dear World* (1968), *Gypsy* (1974), *The King And I* (1978), *Sweeney Todd* (1979), *A Little Family Business* (1982), and after a 23-year hiatus for *Murder She Wrote* and other film projects, she returned to Broadway in *Deuce* (2007), *Blithe Spirit* (2009), *A Little Night Music*, (2010), *The Best Man* (2011), an Australian tour of *Driving Miss Daisy* (2013) and *Blithe Spirit* in London (2014). Films include *National Velvet*, *The Harvey Girls*, Frank Capra's *State of the Union* (Academy Award® nomination), Cecil B. DeMille's *Samson and Delilah*, *The Court Jester*, *The Long Hot Summer*, *The Manchurian Candidate* (Academy Award® nomination), *Death on the Nile*, *Beauty and the Beast*, *Anastasia*, *Nanny McPhee* and *Mr. Popper's Penguins*. She will next be seen in *Mary Poppins Returns* and a new animated version of *The Grinch Who Stole Christmas*, co-starring Benedict Cumberbatch. A recipient of the National Medal of the Arts, the Kennedy Center Honors, the British Academy of Film and Television Arts Silver Mask for Lifetime Achievement, she is also a member of the Theatre and Television Halls of Fame, and a Dame Commander of the British Empire.



Emily Watson

Marmee in *Little Women*

Emily Watson is one of the industry's most acclaimed stage and screen actresses, highlighted by her OBE honour in 2015 for her Services to Drama. Emily first came to the attention of the film world with her memorable performance in Lars von Trier's *Breaking the Waves*. For this, Emily received multiple "Best Actress" awards, most notably the New York Film Critics Circle. Emily was also nominated for Best Actress at the Academy Awards®, The Golden Globes®, and BAFTA Awards. *Breaking the Waves* was Emily's first film. Since this, Emily has been nominated for Academy®, Golden Globe®, BAFTA and Screen Actors Guild Awards®, as well as receiving a BAFTA award for Best Leading Actress for her performance in the miniseries *Appropriate Adult*. Emily is currently shooting a Richard Eyre-directed BBC2 adaptation of *King Lear*, starring alongside an all-star cast that includes Anthony Hopkins and Emma Thompson. Emily will be seen in the upcoming films *On Chesil Beach*, the adaptation of Ian McEwan's bestselling novel, and *The Happy Prince*, a film which tells the untold story of the last days of Oscar Wilde's life, starring alongside Colin Firth, Colin Morgan, Miranda Richardson, and Rupert Everett, who also directs. Emily was most recently seen in the National Geographic Channel Emmy®-nominated drama *Genius*. Last year, Emily was also seen in BBC One's psychological thriller, *Apple Tree Yard*, written by Amanda Coe. Emily's other recent film and television credits include *A Song For Jenny*, *The Dresser*, *Everest*, *The Theory of Everything*, *Testament of Youth*, *A Royal Night Out*, *Anna Karenina*, *Belle*, *The Book Thief* and *War Horse*. A veteran of the London stage, Emily's theatre credits include a number of productions at the Royal National Theatre, including *Three Sisters*, and she has also worked extensively with the Royal Shakespeare Company in such productions as *Jovial Crew*.



Heidi Thomas

Screenwriter and Executive Producer, *Little Women*

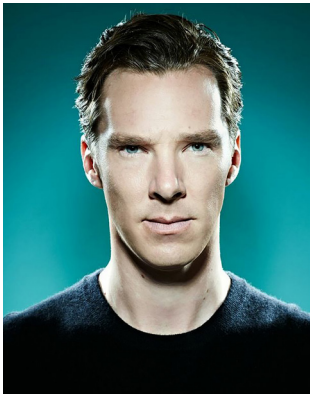
Heidi Thomas is one of the UK's top dramatists, and her acclaimed career in stage, film and television drama spans 25 years. Her award-winning theatrical work has been produced by the Liverpool Playhouse, Almeida, Royal Court and Chichester Festival Theatres, on Broadway, and by the National Theatre Studio and the Royal Shakespeare Company. Her classic adaptations for the large and small screen include *Cranford*, *Return to Cranford*, *Madame Bovary*, *Ballet Shoes*, *I Capture The Castle*, and *Little Women*. Other credits include the revived *Upstairs Downstairs*, *Lilies*, and her hit BBC show *Call the Midwife*, which is now in its 7th season on PBS and seen in 237 countries worldwide. Heidi's screen work has been acknowledged and awarded by the Emmys®, BAFTA, the Writer's Guild of Great Britain, the National Television Awards, the Arts Council of Great Britain, the Christopher Society, the Broadcasting Press Guild, and the Royal Television Society.



Colin Callender
Executive Producer, *Little Women*

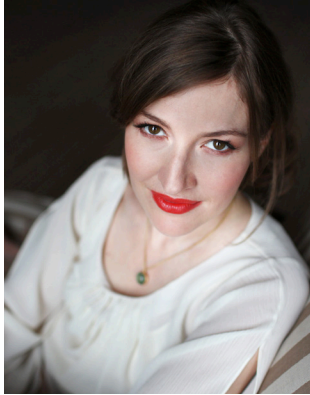
Award-winning producer Colin Callender began his career as stage manager at London's Royal Court Theatre working with David Hare and Sam Sheppard. He won an Emmy® for the television adaptation of the RSC's *The Life and Adventures of Nicholas Nickleby* for Channel 4, a Tony® for *Hedwig and the Angry Inch*, a Golden Globe®, BAFTA and Peabody for *Wolf Hall*, and an Olivier for *Harry Potter and the Cursed Child*. As president of HBO Films, he was responsible for an unprecedented award-winning slate of movies and miniseries, including Mike Nichols' adaptation of *Angels in America*, starring Al Pacino and Meryl Streep, and Gus van Sant's Cannes Film Festival Palme d'Or winner *Elephant*. Callender is a Trustee of the New York Public Theater and the NYU Tisch School of the Arts and recently received a Knighthood in the Queen's New Year's Honours list for his services to British film, theatre and television in the US. In 2012, Callender founded Playground, a New York and London based television, film and theatre production company. Playground has produced over 60 hours of primetime television drama garnering 15 Emmy® nominations, 20 BAFTA nominations and 12 Golden Globe® nominations, including a Golden Globe® win for Best Miniseries and a BAFTA win for Best Drama Series. Recent television productions include the Emmy®-nominated and BAFTA, Golden Globe® and Peabody Award winning adaptation of Hilary Mantel's *Wolf Hall*, RTS winning, Golden Globe®-nominated and BAFTA-nominated adaptation of Ronald Harwood's *The Dresser*, Oscar® winner Kenneth Lonergan's critically acclaimed adaptation of *Howards End* starring Hayley Atwell, Matthew Macfayden and Tracey Ullman, and Richard Eyre's upcoming adaptation of *King Lear* starring Anthony Hopkins and Emma Thompson.

The Child in Time



Benedict Cumberbatch
Stephen Lewis in *The Child in Time*

Benedict Cumberbatch is best known for playing the title role of Sherlock Holmes in the Steven Moffat/Mark Gatiss adaptation of the Conan Doyle books, which aired on the BBC and MASTERPIECE. *Sherlock* earned him international acclaim and several awards, including a Best Actor Emmy® in 2014. In 2015, Benedict portrayed Alan Turing in *The Imitation Game*, a role that earned him a BAFTA, Golden Globe® and Academy® nomination as Best Actor. Other notable big screen performances include the title role in Marvel's *Dr. Strange*, the dragon Smaug in Peter Jackson's *The Hobbit*, Khan in JJ Abrams' blockbuster *Star Trek: Into Darkness*, Julian Assange in *The Fifth Estate*, Little Charles Aiken in *August: Osage County*, Ford in Steve McQueen's Oscar-winning *12 Years A Slave* and Billy Bulger alongside Johnny Depp in *Black Mass*. Other film work includes Major Stewart in Steven Spielberg's film adaptation of *War Horse* and Peter Guillam in Tomas Alfredson's *Tinker Tailor Soldier Spy*, *Starter for Ten*, *Amazing Grace*, *Stuart: A Life Backward*, *The Other Boleyn Girl*, *Jungle Book* and the role of the dastardly Paul Marshall in Joe Wright's Oscar®-nominated *Atonement*. For TV, early roles include *To The Ends Of The Earth*, *The Last Enemy* and *Small Island* – all of which aired on MASTERPIECE – and his powerful portrayal of Stephen Hawking in the BBC drama *Hawking*, which earned him his first BAFTA nomination. Benedict's portrayal of Christopher Tietjens in the BBC/HBO drama *Parade's End* earned him an Emmy® nomination and in 2016 his portrayal of Richard III in the BBC/PBS *Hollow Crown* earned him another BAFTA nomination. On stage, in 2011 Benedict's alternating roles of creature and Dr. Frankenstein in Danny Boyle's production of *Frankenstein* at The National Theatre earned him an Olivier Award and in 2015 his Hamlet at London's Barbican Theatre broke box office records. His upcoming projects include *Avengers: Infinity War*, *How the Grinch Stole Christmas* and *Melrose*.



Kelly Macdonald

Julie Lewis in *The Child in Time*

A native of Glasgow, Scotland, Kelly Macdonald is perhaps best known as Margaret Schroeder on *Boardwalk Empire*, the voice of Merida in *Brave* and for pivotal roles in work by some of the most influential filmmakers of our time – *No Country for Old Men* by the Coen brothers, Robert Altman’s *Gosford Park* and Danny Boyle’s *Trainspotting* and its sequel, *T2 Trainspotting*. Last fall, Kelly starred opposite Domhnall Gleeson and Margot Robbie in Simon Curtis’ *Goodbye Christopher Robin*, for which she received a British Independent Film Award nomination for Best Supporting Actress. For television, Kelly most recently starred in an episode of the acclaimed anthology series *Black Mirror* (Netflix). She garnered an Emmy Award® for her performance as the title character opposite Bill Nighy in the HBO original film *The Girl In The Café*, directed by David Yates from a screenplay by Richard Curtis. In 2010, she received a Golden Globe Award® nomination and shared 2011 and 2012 Screen Actors Guild Awards® with the cast of *Boardwalk Empire*, the critically acclaimed HBO series from creator Terence Winter and executive producer Martin Scorsese. At the 2018 Sundance Film Festival, Kelly stars in *Puzzle* (Premieres Section) directed by Marc Turtletaub from a screenplay by Oren Moverman, playing a suburban housewife whose world expands when she discovers she has a gift for assembling puzzles. This fall, she’ll play Mrs. Hudson in the comedy *Holmes & Watson* with Will Ferrell, John C. Reilly, Hugh Laurie and Ralph Fiennes for director Etan Cohen and Columbia Pictures. On television (Sky in the UK) this year, Kelly will star in *Urban Myths: Mick & Margaret*, a light hearted and touching look at the decades-long “special relationship” between Britain’s greatest rock star and the Queen’s sister. Kelly is Princess Margaret; Jamie Campbell Bower is Mick Jagger.



Rebecca Eaton

Executive Producer, MASTERPIECE

Rebecca Eaton took the helm of the PBS series MASTERPIECE THEATRE and MYSTERY! in 1985, and later oversaw a highly successful relaunch of MASTERPIECE which attracted a new generation of viewers. She has brought American audiences Hilary Mantel’s *Wolf Hall*, the recent hits *Victoria*, *Sherlock*, *Poldark*, *Downton Abbey* — the most-watched drama in PBS history — as well as such high-profile titles as *Grantchester*, *Prime Suspect*, *Wallander*, *Cranford*, *Little Dorrit*, and *The Complete Jane Austen*. Under her leadership, MASTERPIECE has won 62 Primetime Emmy Awards®, 16 Peabody Awards, six Golden Globes®, and two Academy Award® nominations. In 2011, Rebecca was named one of TIME’s 100 most influential people. Her distinguished career has earned her the official recognition of Queen Elizabeth II — with an honorary OBE (Officer, Order of the British Empire). A graduate of Vassar College, Rebecca began her career at the BBC World Service, then moved on to PBS station WGBH Boston where she produced programs ranging from business to sports to dance to drama before becoming executive producer of MASTERPIECE. Rebecca’s memoir, *MAKING MASTERPIECE: 25 Years Behind the Scenes at Masterpiece Theatre and Mystery! on PBS*, was published by Viking in 2013.

The top-rated primetime show on PBS, MASTERPIECE celebrated its 45th anniversary in 2016. MASTERPIECE is presented on PBS by WGBH Boston. Rebecca Eaton is executive producer. Funding for MASTERPIECE on PBS is provided by Viking and Farmers Insurance® with additional support from public television viewers and contributors to The MASTERPIECE Trust.

pbs.org/masterpiece

January, 2018